

Mid-America Bigfoot Research Center

<http://192.168.254.26/forums/>

Evaluation of 11 Alleged Sasquatch Tracks (Casts)

<http://192.168.254.26/forums/viewtopic.php?f=114&t=2537>

Author: **Darkwing** [Sun Dec 05, 2010 8:09 pm]

Post subject: **Evaluation of 11 Alleged Sasquatch Tracks (Casts)**

Part I

AIBR wrote:

By Zack Clothier (© 2001)

The giant human-like footprints found throughout the United States and Canada are considered to be the best evidence supporting the existence of a large, bipedal hominoid living in the forests of North America, particularly the Pacific Northwest. It is called Sasquatch, more commonly referred to as "Bigfoot." Hundreds of these footprints have been found, are they just hoaxes? Or could a real animal be making them? This article will examine 11 track casts allegedly made by the Sasquatch, and will briefly discuss a few track-related photographs. All of the casts examined here are copies from the originals; sometimes second and even third generation copies, and this, of course, reduces the quality of the casts and may not reflect all the details that were visible in the original. Even original castings are one step removed from their original forms in the ground. Conclusions based on casts alone are often speculative and sometimes quite inaccurate. Note: Misidentifications of common species have been ruled out in the following casts.

1967 Bluff Creek, CA - Filmsite Cast from Patterson/Gimlin Movie

Attachment:

File comment: Figure 1.1



sasquatchfootprintevaluation.jpg [10.65 KiB | Viewed 1437 times]

Dimensions: 14.5" x 5"

Location: Bluff Creek, CA

Year: 1967

Comments: Patterson/Gimlin Filmsite Cast

Film aside, this footprint is very natural looking. The space between the toes and pad is as it should be (Figure 1.2). The footprint is flat, a commonly reported aspect of most Sasquatch prints. From viewing the film, and photographs of other casts that were taken from the site, it is possible to rule out a wooden object as the source of these tracks; whatever made the prints had a very flexible foot. In this particular copy there appears to be what I call "skin overlap", where the skin on the side of the foot occasionally registers on the sidewalls of the imprint. (See Figure 1.3).

This matches very well with the skin overlap on a human footprint I have in my possession. (Figure 1.4).

Attachment:

File comment: Figure 1.1



sasquatchfootprintevaluation2.jpg [4.04 KiB | Viewed 1437 times]

Attachment:

File comment: Figure 1.1



sasquatchfootprintevaluation3.jpg [7.29 KiB | Viewed 1437 times]

Attachment:

File comment: Figure 1.1



sasquatchfootprintevaluation4.jpg [6.14 KiB | Viewed 1437 times]

Other footprint casts from the filmsite show natural variation in overall length and width, toe position, and foot flexion. Out of the 10 (consecutive) casts taken by Bob Titmus at the filmsite, one of them showed a pronounced midtarsal (midfoot) pressure ridge, indicating a flexible foot.

Conclusions: This track has all the qualities a real footprint would have. I found no sign of hoaxing.

Attachment:



sasquatchfootprintevaluation5.jpg [36.66 KiB | Viewed 1437 times]

1996 Blue Mountains Casting

Attachment:

File comment: Figure 2.1



sasquatchfootprintevaluation6.jpg [9.03 KiB | Viewed 1437 times]

Dimensions: 13.75" x 5.25"

Location: Near the Umatilla National Forest in the Blue Mountains of Washington state

Year: 1996

Comments: Jeff Meldrum made this cast. Paul Freeman led him to the tracks. Jeff found 40+ footprints at the site, seven of which were preserved as casts.

This track is very natural, showing the foot's contour, pressure cracks around the heel, on the sides of the pad, and around the toes. (Figure 2.2).

The footprint isn't extraordinarily deep, but the exact ground conditions at the time the tracks were made are not known.

Attachment:

File comment: Figure 2.2



sasquatchfootprintevaluation7.jpg [6.21 KiB | Viewed 1437 times]

The mark in Figure 2.3 is the result of the foot stepping on a small rock. This was evident in photographs of the footprint before casting. (See corresponding photograph:

http://www.isu.edu/~meldd/jpg/007_1.jpg.)

Attachment:

File comment: Figure 2.3



sasquatchfootprintevaluation8.jpg [7.17 KiB | Viewed 1437 times]

Figure 2.3

Evidence of a hoax was found, however; a small impression (Figure 2.4) was discovered in two casts of the same foot. The impression is in photographs of the original casts (Figures 2.5 & 2.6). It was in the exact same place in both casts.

Attachment:

File comment: Figure 2.4



sasquatchfootprintevaluation9.jpg [8.9 KiB | Viewed 1437 times]

Figure 2.4

Here is Loren Coleman's input on this mystery artifact:

"If we are to speculate that Zack Clothier's discovery of this apparent artificial artifact is evidence of some form of deception, we might take the extreme skeptical approach that this is the result of a wooden (or similar) mallet attachment showing through the molds employed. The notion is that this tool was used to press the molds down to give the impression of heavy weight, plus walnut shells and/or plastic/wax imprints of fingerprints could also be used for dermal results. One would have to examine the original cast molds, however, to determine if this Clothier artifact is the result of some kind of cast molding process. Until then, all of the above is mere speculation. - Loren Coleman" Only three of the five toes registered in this print. (Figure 2.7). The big toe appears to be connected directly to the pad, and is very short. There is no space between the toe pad and the footpad, which would be expected to show unless the Figure 2.5 Figure 2.6 foot had sunk in the mud deeply, which is not the case here; the footprint is very shallow.

Attachment:

File comment: Figure 2.5 and Figure 2.6



sasquatchfootprintevaluation10.jpg [13.15 KiB | Viewed 1437 times]

One footprint from the site photograph: http://www.isu.edu/~meldd/jpg/005_1.jpg looks natural, except for one thing - the depth of the foot pad compared to the depth of the toes is wrong, unless we assume that the Sasquatch walks on just its foot pad, and lifts its feet before following through on its toes. There is also not much compression between the toes and the anterior part of the pad. This, presumably, would be prominent since the tracks were in mud. Photographs of tracks can sometimes be deceptive though. I will not render any conclusions based on these alone.

Another footprint that was photographed at the site is very unnatural looking; the edges seem too straight and crisp. Nevertheless, this could have been due to ground conditions. View the photograph here: http://www.isu.edu/~meldd/jpg/004_1.jpg

Conclusions: I am divided on the authenticity of this cast; I cannot overlook the strange artifact I discovered, but on the other hand, if these tracks were hoaxed, the perpetrator probably had some familiarity with Sasquatch tracks, and would have spent a considerable amount of time to pull it off. See next evaluation for another track that was casted at this site.

Attachment:

File comment: Figure 2.7



sasquatchfootprintevaluation11.jpg [7.59 KiB | Viewed 1437 times]

Attachment:



sasquatchfootprintevaluation12.jpg [22.2 KiB | Viewed 1437 times]

1996 Blue Mountains Casting ("Half track")

Attachment:

File comment: Figure 3.1



sasquatchfootprintevaluation13.jpg [8.79 KiB | Viewed 1437 times]

Dimensions: 8" x 5.25"

Location: Near the Umatilla National Forest in the Blue Mountains of Washington state

Year: 1996

Comments: This is a footprint from the same trail as the above track. Jeff Meldrum made this cast. Paul Freeman led him to the tracks. Jeff found 40+ footprints, seven of which were preserved as casts.

Several "half tracks" were also found where the creature had increased speed and traveled up a small incline. This is a cast of one of those halftracks. Another interesting feature in this track is the toe slide-ins. This footprint was found going up a small incline and because of the muddy conditions the foot had slipped back, leaving toe slide-ins. Meldrum speculates that the Sasquatch can flex its foot in the midtarsal region. Similar "half tracks" been found elsewhere.

The depth of this print is impressive; it is just over 2.25 inches deep. (See Figure 3.2). If these were hoaxed, some type of tool would have probably been required to imprint them in so deep, although this would not be necessary if the mud was extremely soft.

The area where the toe slide-ins are is as it should be for a foot slipping back on a soft substrate. For a close-up of the toe slide-ins, see Figure 3.3.

Attachment:

File comment: Figure 3.2



sasquatchfootprintevaluation14.jpg [5.85 KiB | Viewed 1437 times]

Attachment:

File comment: Figure 3.3



sasquatchfootprintevaluation15.jpg [7.85 KiB | Viewed 1437 times]

Attachment:

File comment: Figure 3.4



sasquatchfootprintevaluation16.jpg [4.44 KiB | Viewed 1437 times]

Comparing the toes in both Blue Mountain casts, the toes in this cast are similarly connected (Figure 3.4). It is more likely that the toes would be closer to the pad in this track, as they would be used in gripping the soft earth.

This particular track was deep enough to leave a profile of the first and fifth digits (Figures 3.5 and 3.6 respectively).

Attachment:

File comment: Figure 3.5



sasquatchfootprintevaluation17.jpg [10.05 KiB | Viewed 1437 times]

Attachment:

File comment: Figure 3.6



sasquatchfootprintevaluation18.jpg [10.63 KiB | Viewed 1437 times]

Conclusions: No matter how "real" this track may look, we should not ignore the evidence of a possible hoax (the mysterious artifact), as revealed above in the previous Blue Mountain cast that was evaluated. (Figure 2.1). However, if these tracks were part of an elaborate hoax, the person responsible did an excellent job, and it was well thought out. The hoaxer would have also had to carry several different fake footprints with them. One is left to draw his/her own conclusions on the credibility of Paul Freeman.

Attachment:



sasquatchfootprintevaluation19.jpg [17.02 KiB | Viewed 1437 times]

Author: **Darkwing** [Sun Dec 05, 2010 8:58 pm]

Post subject: **Re: Evaluation of 11 Alleged Sasquatch Tracks (Casts)**

AIBR wrote:

Footprint cast (Unknown Origin) - 1976 Blue Creek Mountain? Freeman Cast?
1974 Sultan River Casting

Footprint cast (Unknown Origin) - 1967 Blue Creek Mountain? Freeman Cast?

Attachment:

File comment: Figure 4.1



sasquatchfootprintevaluation20.jpg [7.92 KiB | Viewed 1432 times]

Dimensions: 13" x 4.5" across the toes, 4" across the heel

Location: Unknown (See comments below)

Year: Unknown

Comments: This track is thought to be one of the tracks found on Blue Creek Mountain Rd., CA, in 1967. It has also been suggested that it is a Paul Freeman cast from the early 1980s. Dermal ridges are clear in this cast.

While I am not an expert in dermatoglyphics, the first thing I noticed about this cast was the odd places the dermal ridges appeared. They seem to start about 2" up the heel, with a suspicious line right underneath where they begin (Figure 4.2).

On another area of the cast the dermal ridges look as though they are not even part of the footprint itself, but are on the outside edge of the whole casting (Figure 4.3).

Attachment:

File comment: Figure 4.3



sasquatchfootprintevaluation22.jpg [8.14 KiB | Viewed 1432 times]

Attachment:

File comment: Figure 4.2

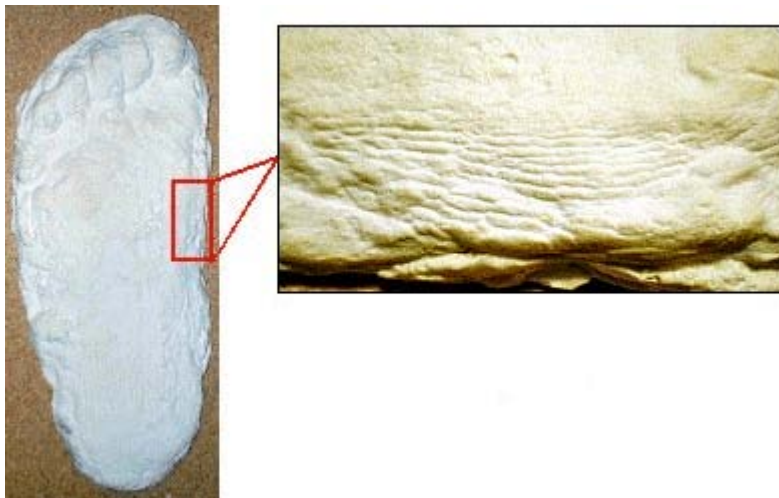


sasquatchfootprintevaluation21.jpg [12.3 KiB | Viewed 1432 times]

Despite the unusual positions of some of the ridges, they are very natural looking. (Figure 4.4), and some of the ridges appear around the toes (Figure 4.5).

Attachment:

File comment: Figure 4.4



sasquatchfootprintevaluation23.jpg [18.7 KiB | Viewed 1432 times]

When I first saw the dermal ridges in this cast I wondered if they could have somehow been faked. They looked like they could have been made from the serrated edge on a butter knife (or other knife), so I experimented with this. First I took a small piece of clay and ran the edge of the butter knife along it (See figure 4.6), then casted the impressions. The end result (Figure 4.7) was very close to some of the dermal ridges that are in this "Sasquatch" track.

Attachment:

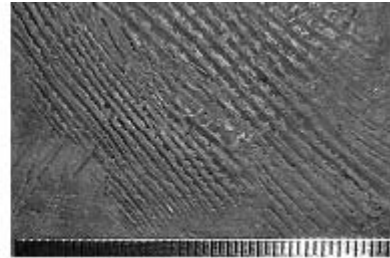
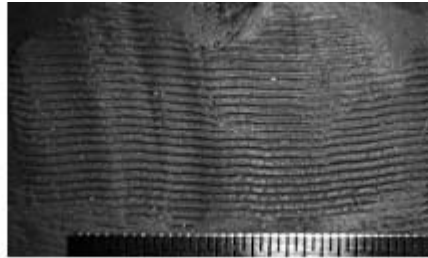
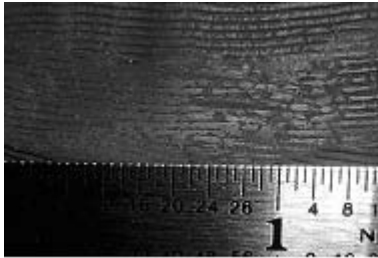
File comment: Figure 4.5



sasquatchfootprintevaluation24.jpg [8.28 KiB | Viewed 1432 times]

Attachment:

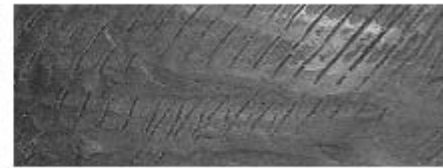
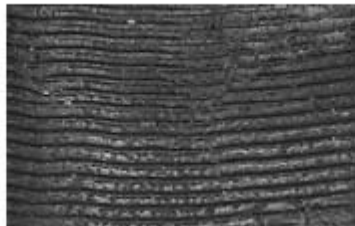
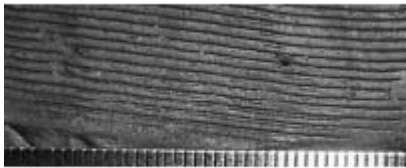
File comment: Figure 4.6



sasquatchfootprintevaluation25.jpg [23.22 KiB | Viewed 1432 times]

Attachment:

File comment: Figure 4.6



sasquatchfootprintevaluation26.jpg [17.65 KiB | Viewed 1432 times]

Attachment:

File comment: Figure 4.7

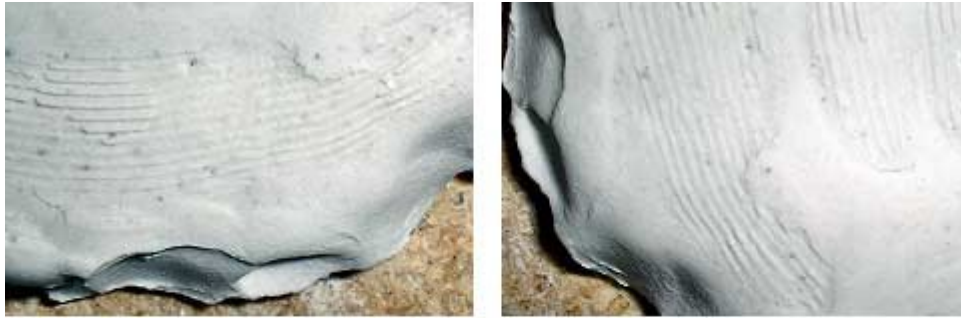


Figure 4.7
**Experimental
cast showing
"dermal ridges"
created from
a butter knife.**

sasquatchfootprintevaluation27.jpg [44.02 KiB | Viewed 1432 times]

Conclusions: After discovering the marks made by a butter knife can create something very similar to the "dermal ridges" in this Sasquatch footprint cast, and the discrepancies in the ridges, I am skeptical about its authenticity.

Attachment:



sasquatchfootprintevaluation29.jpg [28.32 KiB | Viewed 1432 times]

1974 Sultan River Casting

Attachment:

File comment: Figure 5.1



sasquatchfootprintevaluation30.jpg [9.72 KiB | Viewed 1432 times]

Dimensions: 16.75" x 7.25" across the toes, 5.75" across the heel.

Location: Sultan River, WA

Year: 1974

Comments: This track was casted by Bigfoot investigator Cliff Crook, on the banks of the Sultan River in Washington. It was found with others, on both sides of the Sultan River. The tracks were trailing in and out of the river. Other tracks had been seen in the general area prior to the discovery of this print.

A natural track, displaying 5 toes, the foot's contour, and an elongated heel. The toes are lined up in a sharp downward slope from right to left, but not arched as much as those on the human foot, and they are close to the footpad (Figure 5.2). The last 2 digits seem to be curled, as revealed by their depth and closeness to the footpad (Figure 5.3).

Attachment:

File comment: Figure 5.2



sasquatchfootprintevaluation31.jpg [8.75 KiB | Viewed 1432 times]

Attachment:

File comment: Figure 5.3



sasquatchfootprintevaluation32.jpg [11.52 KiB | Viewed 1432 times]

I have seen this happen in human footprints where the toes were curled - See figures 5.4 for comparisons.

Attachment:

File comment: Figure 5.4



sasquatchfootprintevaluation33.jpg [7.49 KiB | Viewed 1432 times]

Attachment:

File comment: Figure 5.4



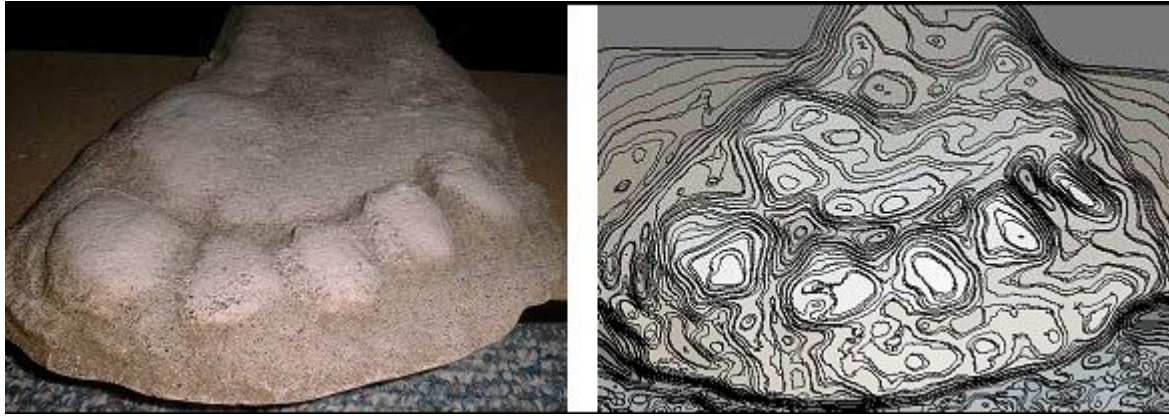
*Figure 5.4 Human Foot (cast)
showing curled toes.*

sasquatchfootprintevaluation34.jpg [49.02 KiB | Viewed 1432 times]

The contour of the foot is shown in Figure 5.5. Lighter colors indicate raised elevations, while darker areas indicate lower elevations, similar to a topographical map.

Attachment:

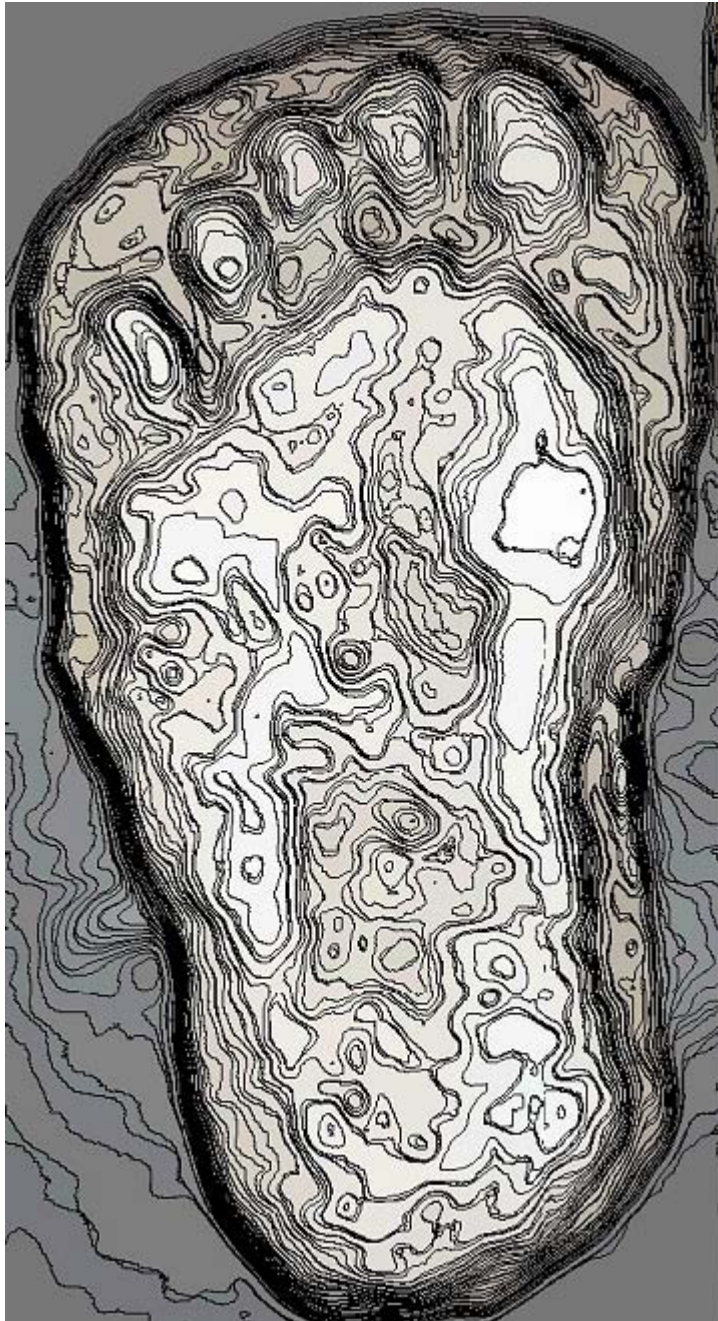
File comment: Figure 5.5



sasquatchfootprintevaluation35.jpg [51.83 KiB | Viewed 1432 times]

Foot contour - Lighter areas indicate raised higher elevations

Attachment:



sasquatchfootprintevaluation36.jpg [105.75 KiB | Viewed 1432 times]

Another view of the foot's contour. Again, the lighter areas indicate raised elevations (eg the toe pads), and the darker areas are lower elevations. Read the black lines like you would on a topographical map.

Conclusions: After examining this cast I can find nothing that points to a hoax of any kind. This does not mean the track could not have been hoaxed, I just do not see any evidence of that.

Attachment:



sasquatchfootprintevaluation37.jpg [45.36 KiB | Viewed 1432 times]

Part 3 Coming soon

Author: **Darkwing** [Sun Dec 05, 2010 9:58 pm]

Post subject: **Re: Evaluation of 11 Alleged Sasquatch Tracks (Casts)**

=====

AIBR wrote:

2000 Hoh Reservation Casting

Attachment:

File comment: Figure 6.1



sasquatchfootprintevaluation38.jpg [8.8 KiB | Viewed 1426 times]

Dimensions: 16.25" x 7" across the toes, 4" across the heel.

Location: Hoh Rain Forest in the Olympic Mountains, casted on the Hoh Indian Reservation, WA.

Year: 2000

Comments: This track was found by Bigfoot investigator Cliff Crook in June-July 2000. Other suspected Sasquatch sign found in the area consisted of hair samples, matted grass beds, and unidentifiable noises.

This track differs from the "common" Sasquatch track in several ways. The toes are lined up almost straight across the foot, the footpad is almost squared off on both sides at the top, and the middle toe is very small compared to the rest of the digits. (See Figure 6.2).

The toes look like they have been rocked from side to side (Figure 6.3), which is suspect. This suggests a fake foot was used to make the track. If this is true the hoaxer would have rocked the wooden (or similar) structure from side to side to impress it deeply into the ground to simulate great weight. He (the hoaxer) would have also been careful not to make the sides deeper.

Attachment:

File comment: Figure 6.2



sasquatchfootprintevaluation39.jpg [13.79 KiB | Viewed 1426 times]

Attachment:

File comment: Figure 6.3



sasquatchfootprintevaluation40.jpg [6.66 KiB | Viewed 1426 times]

A rocking motion would explain why the first and last two digits are larger than the middle digit, which did not get pressed in as deep due to the fact that it was in the center.

The toes are very smooth (Figure 6.2), this could mean they were created from a wooden fake "foot".

Attachment:

File comment: Figure 6.4



sasquatchfootprintevaluation41.jpg [10.39 KiB | Viewed 1426 times]

A side view of the cast (Figure 6.4) shows a sharp decline between the footpad and toe pads, which is quite unnatural.

Attachment:

File comment: Figure 6.5



Figure 6.5 Strange scratches visible on the ball.

sasquatchfootprintevaluation42.jpg [75.29 KiB | Viewed 1426 times]

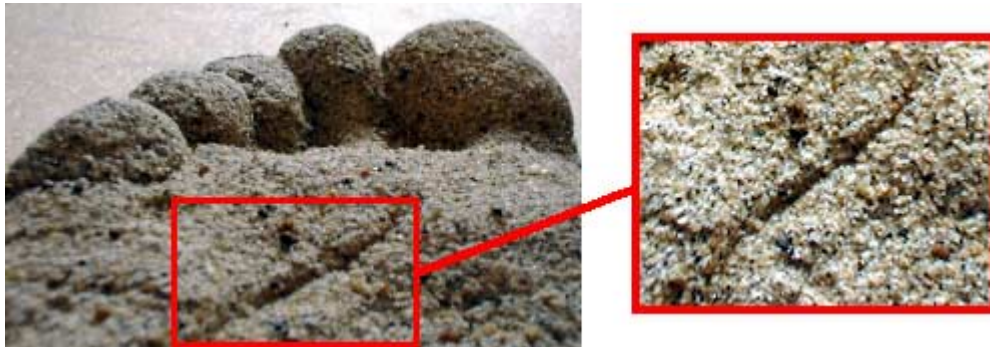
Figure 6.5 (above) shows strange "scratches" that are noticeable on the ball of the foot. They are not skin creases,

as they would appear indented in the cast; these marks are raised, meaning they were bumped out on the foot when they were made. Two explanations for these scratches are: 1. They are parts of the skin which folded out from the foot (not likely since the skin would probably flatten out when weight was applied - i.e. walking), or 2. The hoaxer tried to imitate skin creases but forgot that when the track was cast they would be the opposite from skin creases.

Skin creases appear indented in casts, see Figure 6.6 (below) for a human footprint (cast) showing skin creases. Although it looks bumped out, it is actually indented in the plaster.

Attachment:

File comment: Figure 6.6



sasquatchfootprintevaluation43.jpg [23.04 KiB | Viewed 1426 times]

Attachment:

File comment: Figure 6.7

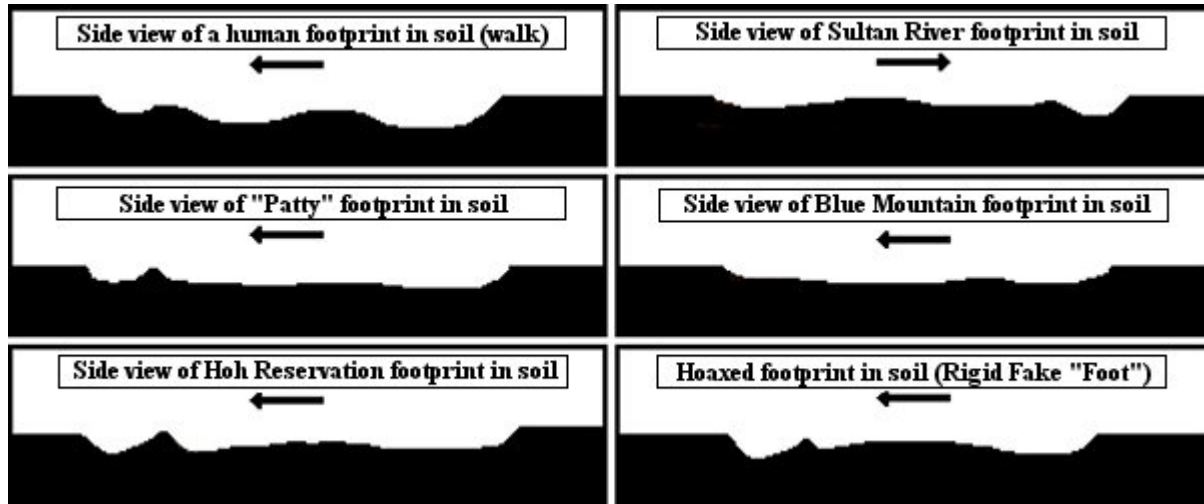


sasquatchfootprintevaluation44.jpg [9.72 KiB | Viewed 1426 times]

The way the track was imprinted into the ground is odd (Figure 6.7). The heel is slightly deeper, as would be expected, but it is very flat and long, and ends abruptly. There is no starting point for the ball of the foot, it just slants up after the heel ends.

Attachment:

File comment: Figure 6.8



sasquatchfootprintevaluation45.jpg [33.23 KiB | Viewed 1426 times]

Figure 6.8 Side views of various Sasquatch tracks in soil. (Note the Sasquatch foot lacks an arch.) These were created by tracing the side view of each cast from photographs. The Hoh footprint resembles what a hoaxed footprint might look like if a rigid structure, such as wood, was used. Arrows indicate the direction of travel. In most instances, the heel is placed down first, followed by the ball, and finally the toes before the foot is lifted out. The heel is unusually narrow compared to other Sasquatch footprints (Figure 6.9).

Conclusions: The evidence here all points to a hoax of some kind, probably accomplished with a wooden "foot."

Attachment:

File comment: Figure 6.9



sasquatchfootprintevaluation46.jpg [8.41 KiB | Viewed 1426 times]

Attachment:



sasquatchfootprintevaluation47.jpg [41.73 KiB | Viewed 1426 times]

All times are UTC - 6 hours

Powered by phpBB © 2000, 2002, 2005, 2007 phpBB Group
<http://www.phpbb.com/>